



Serie

**S - 350 EUR**

**Especificaciones Técnicas**

Carpintería practicable

Cámara Europea

Junta abierta con Junta Central

Sección de Marco ..... 40 mm.

Sección de Hoja ..... 47 mm.

Galce de vidrio ..... de 7,5 a 34 mm.

Peso Máximo por : Hoja Practicable : **120 Kg.**<sup>(1)</sup>

Hoja Oscilo- Batiente : **130 Kg.**<sup>(1)</sup>

Hoja Oscilo- Batiente con opción de Herraje Oculto

Medidas Máximas por Hoja para todas las aperturas :

**1700 mm. x 2500 mm.**<sup>(1)</sup>

(1) Consultar rangos de aplicación con nuestro Dpto. Técnico Comercial

**Clasificación obtenida**

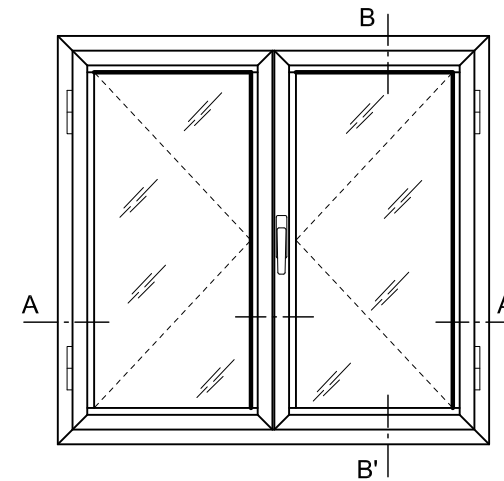
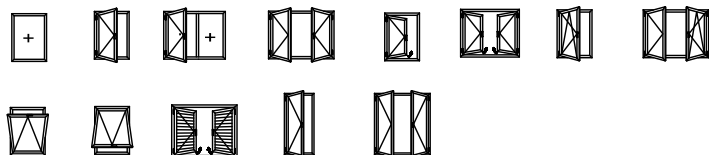
Permeabilidad al aire*	CLASE	<b>4</b>
Estanqueidad al agua*	CLASE	<b>8A</b>
Resistencia al viento*	CLASE	<b>C4</b>
Transmitancia térmica**	<b>3,8</b>	W(m <sup>2</sup> K)
Aislamiento Acústico***	<b>38</b>	(-1;-5)dB

\* Ventana de 2 hojas de 1230 x 1480 mm .

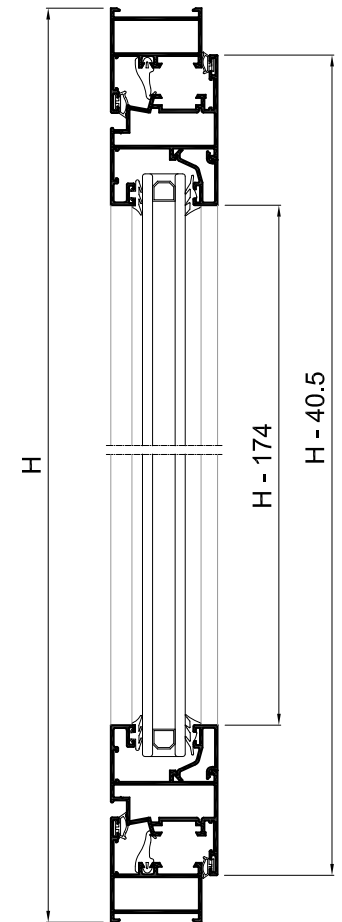
\*\* Ventana de 2 hojas de 1480 x 2180 mm ; Vidrio 4-8-4

\*\*\* Ventana de 2 hojas de 1230 x 1480 mm ; Vidrio Rw: 40 (-2;-6)dB

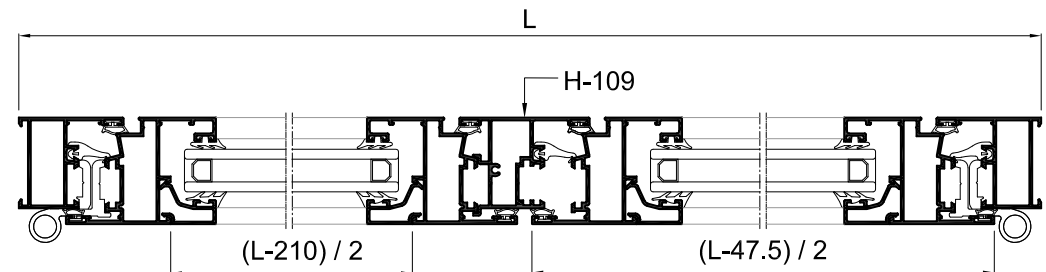
**Posibilidades de Apertura**



**VENTANA 2 HOJAS PRACTICABLES**



**Sección B-B'**

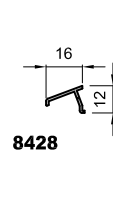
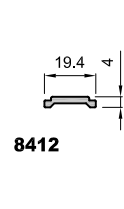
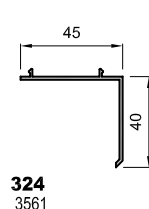
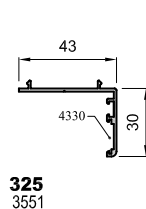
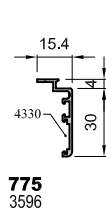
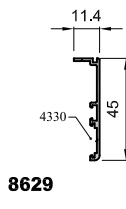
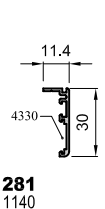
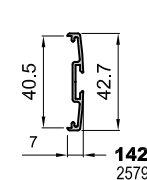
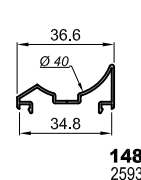
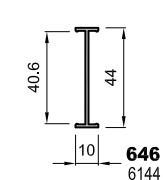
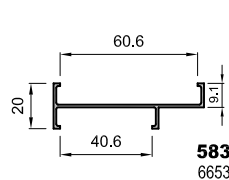
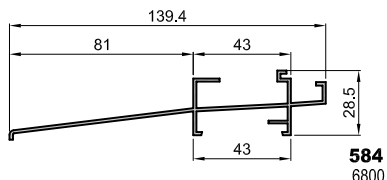
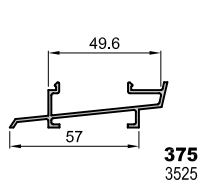
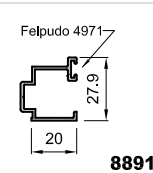
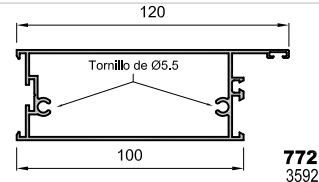
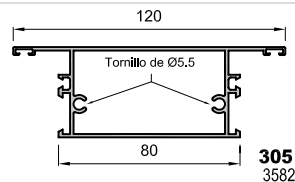
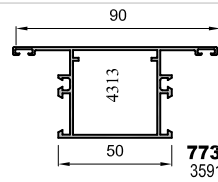
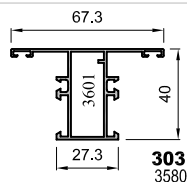
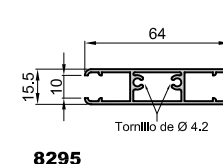
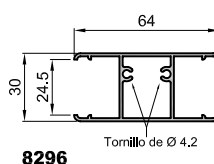
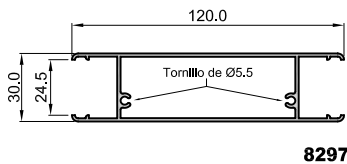
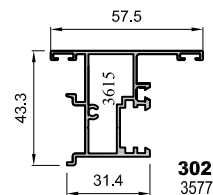
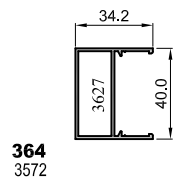
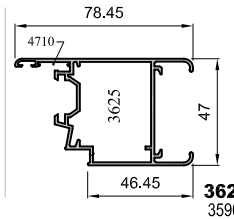
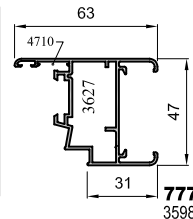
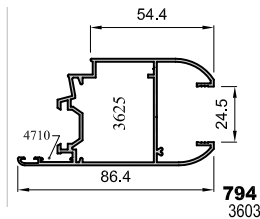
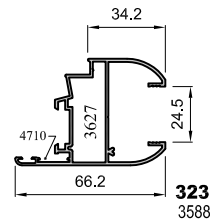
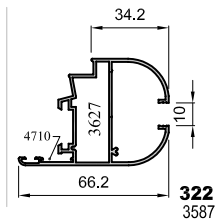
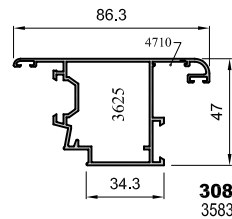
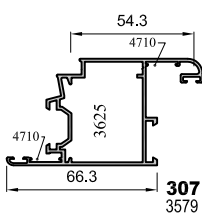
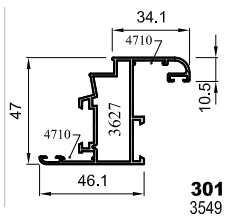
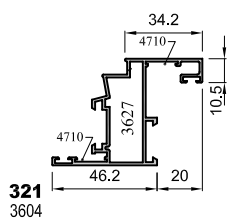
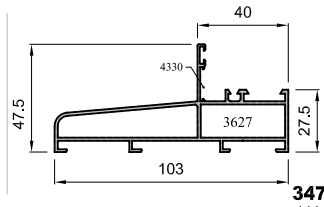
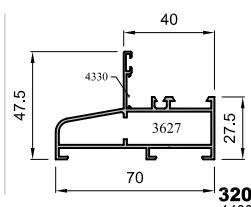
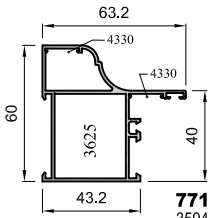
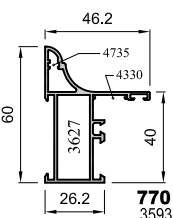
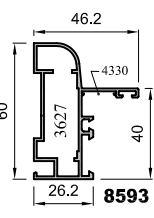
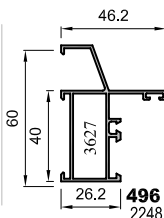
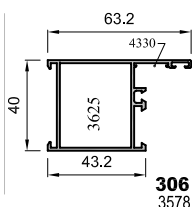
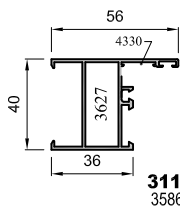
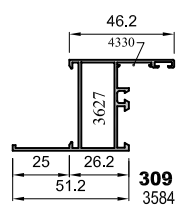
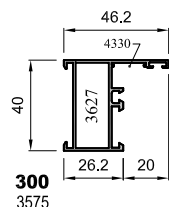


**Sección A-A'**

\* **Tabla de Junquillos 1 (Altura 20 mm)**

# Perfiles

## S - 350 EUR





# Accesorios

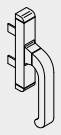
## S - 350 EUR



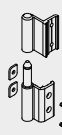
**4024**  
Cremona EURO



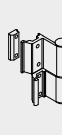
**4019**  
Cremona EURO  
Os-Ba



**4200**  
Cremona  
Nova



**4316**  
Bisagra apertura  
externa



**4390**  
Bisagra regleta  
Ø 14 mm.



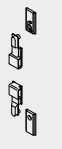
**4724**  
Bisagra Os-Ba  
Simétrica 2º Hoja



**4739**  
Terminal pletina  
metálico



**4840**  
KIT Pasadores  
hoja pasiva metal.  
(sup. e inf.)



**4025**  
Kit Cremona  
EURO



**4010**  
Bisagra compás  
corto ralenti



**4085**  
Bisagra compás  
largo ralenti



**4846**  
Tercer punto  
de cierre



**4710**  
Escuadra  
alineamien.  
14 mm.



**4735**  
Escuadra  
alineamien.  
2 mm.



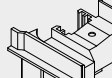
**4330**  
Escuadra  
alineam. 15



**3627**  
Escuadra  
pulsante desc.



**3625**  
Escuadra  
pulsante Puerta



**3615**  
Juego tapajuntas  
acople



**3601**  
Taco pilastra  
ventana



**3600**  
Taco pilastra  
Portada



**4313**  
Taco pilastra  
ancha



**4324**  
Junta  
central



**3016**  
Junta Burbuja  
aximetrica



**4008**  
Patín apoyo hoja



**5002**  
Cierre suplem.  
entre hojas



**4720**  
Cerradero lateral  
doble pletina  
Zamak



**4842**  
Cerradero sup.  
regulable OS-BA



**4337**  
Embelle. salida  
agua  
c/membrana



**4833**  
Cremona  
practicable cover



**4834**  
Cremona os-ba  
Cover



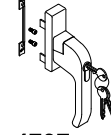
**4725**  
Cremona Prima  
Os-Ba



**4096**  
Cremona Os-Pa  
con llave



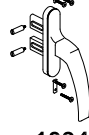
**4398**  
Manilla  
recuperable



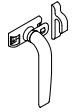
**4707**  
Cremona EURO  
c/ llave



**4723**  
Cremona Prima



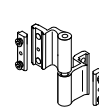
**1034**  
Cremona ap. Ext.  
patillas Balcon.



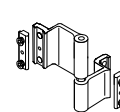
**1044**  
Cierre presión  
(Pequeño)



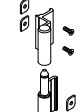
**4727**  
Bisagra Flash  
Izquierda/Derecha



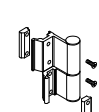
**4768**  
Bisagra  
3º Hoja



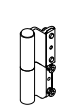
**4769**  
Bisagra Extremo  
"Jirafa"



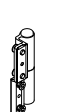
**4352**  
Bisagra ventana  
3 hojas



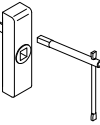
**4389**  
Bisagra regleta  
Ø 16 mm.



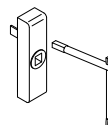
**4744**  
Bisagra Puerta  
24,5 mm. Izda.



**4745**  
Bisagra Puerta  
24,5 mm. Dcha.



**4079**  
Kit Cremona desmont.  
Os-Pa > 2000 mm.



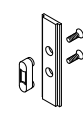
**4365**  
Kit cremona desmont.  
OS-PA < 2000 mm.



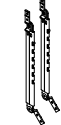
**4002**  
Pasador oculto  
long. variable



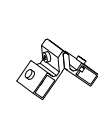
**4003**  
Terminal de  
pletina cremona



**4007**  
Cierre complem.  
cre mona



**4011**  
Bisagra compás regul.  
proyectante



**1237**  
Escuadra pivotes  
ventana (An)



**1238**  
Escuadra Europea  
Puerta (An)



**3622**  
Escuadra pivotes  
hoja ventana



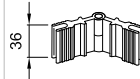
**3623**  
Escuadra europea  
ventana



**3624**  
Escuadra  
europea Puerta



**3626**  
Escuadra puls.  
ventana



**1224**  
Escuadra ángulo  
variable



**4039**  
Escuadra inox.  
alineamiento



**4304**  
Escuadra  
alineam. solapas



**4855**  
Escuadra solapa  
8893



**4754**  
Retenedor  
de hoja



**4848**  
Microventilacion  
practicable



**5026**  
Bulón regulable



**4005**  
Cerradero lateral  
pletina Nylon



**4004**  
Cerradero lateral  
doble pletina Nylon



**4078**  
Pieza sujeción  
junquillo curvo



**4391**  
Escuadra  
junquillos curvos



**4043**  
Juego tapas  
condensación



**4035**  
Embellecedor  
salida agua



**4325**  
Junta central  
"TC"



**4055**  
Junta perim.  
hoja



**4056**  
Junta perimetral  
hoja "TC"



**4397**  
Junta Stilo  
base rígida



**4379**  
Junta acústica  
cerco



**4303**  
Junta acústica  
cerco



**4741**  
Goma para  
batiente



**4009**  
Cierre cangrejo  
Interno



**4366**  
Cierre bisagra  
oculta



**4057**  
Goma exterior  
acristalamiento



**4089**  
Goma interior  
acrist. de 2 a 4  
mm.



**4090**  
Goma interior  
acrist. de 4 a 6  
mm.



**4091**  
Goma Interior  
acrist. de 6 a 8  
mm.



(2 A + 2 B)  
**4353**  
Kit acristalam.  
s/junquillo vent.



(2 A + 2 B)  
**4375**  
Kit acristalam.  
s/junquillo bale.



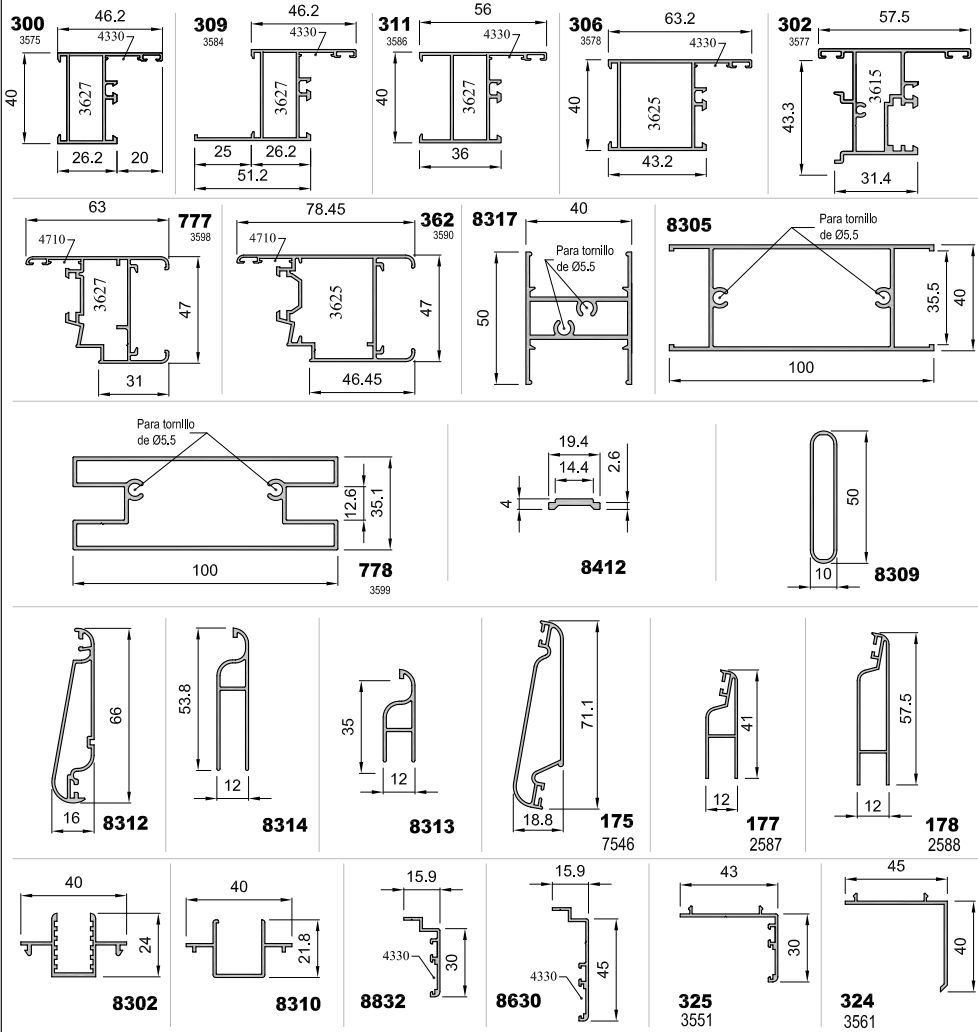
**4356**  
Broca doble diámetro  
(s/junquillo)

### Accesorios Varios

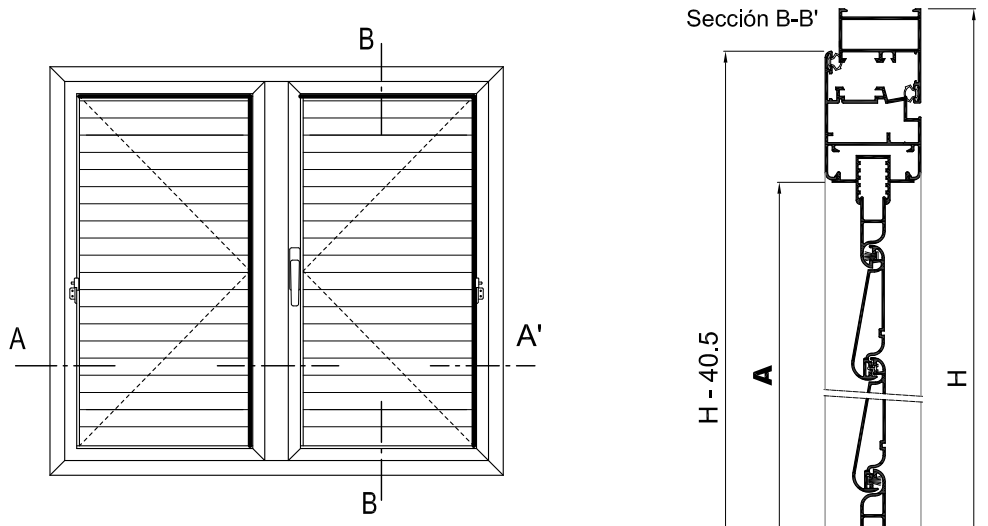
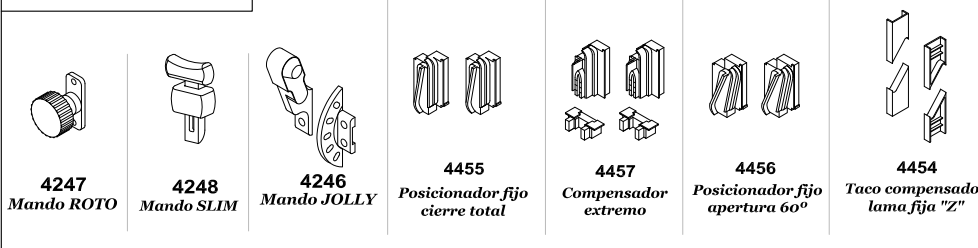
- 3610 Juego fresas S-350 EUR
- 3062 Util general S-350 EUR
- 4841 Util General STILO
- 4201 Kit Cremona Nova
- 4025 Kit Cremona EURO
- 4380 Kit Cremona EURO 2 hojas (s/cremona)  
4002x2 + 4003x2 + 4025 + 4004x2 + 4008
- 4714 Kit Cremona EURO 1 hoja  
4003x2 + 4025 + 4005x2
- 4334 Tijeras ingleses goma
- 4335 Ruleta para goma
- 1161 Patillas
- 4098,4099,4357
- 4373,4374,4758 Cerraduras ST-50 RPT
- 4862 Cerradura Apertura externa
- 5022 Cremona Industrial Prima
- 5023 Cremona Industrial Euro
- 5024 Herraje Os-Ba Industrial

# Perfiles

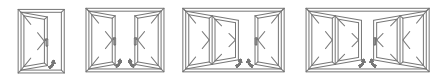
## S - 350 EUR Mallorca



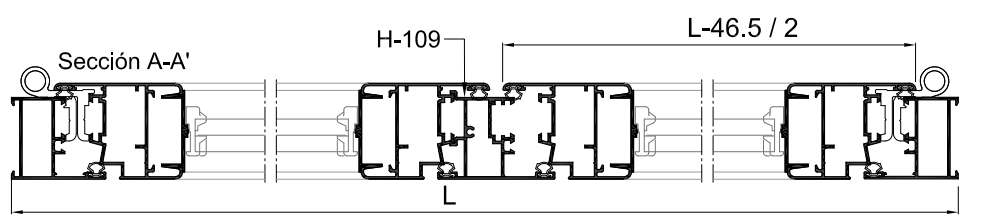
# Accesorios



## VENTANA 2 HOJAS MALLORQUINAS



## Posibilidades de Apertura



Ver Instrucciones de Montaje de las Celosías al final de serie Mallorca Corredera

TABLA DE CELOSÍAS					
REF.	Nº DE LAMAS	* A (mm.)	REF.	Nº DE LAMAS	* A (mm.)
<b>4209</b>	UN55 6 LAMAS	387 - 441	<b>4224</b>	UN55 21 LAMAS	1212 - 1266
<b>4210</b>	UN55 7 LAMAS	442 - 496	<b>4225</b>	UN55 22 LAMAS	1267 - 1321
<b>4211</b>	UN55 8 LAMAS	497 - 551	<b>4226</b>	UN55 23 LAMAS	1322 - 1376
<b>4212</b>	UN55 9 LAMAS	552 - 606	<b>4227</b>	UN55 24 LAMAS	1377 - 1431
<b>4213</b>	UN55 10 LAMAS	607 - 661	<b>4228</b>	UN55 25 LAMAS	1432 - 1486
<b>4214</b>	UN55 11 LAMAS	662 - 716	<b>4229</b>	UN55 26 LAMAS	1487 - 1541
<b>4215</b>	UN55 12 LAMAS	717 - 771	<b>4230</b>	UN55 27 LAMAS	1542 - 1596
<b>4216</b>	UN55 13 LAMAS	772 - 826	<b>4231</b>	UN55 28 LAMAS	1597 - 1651
<b>4217</b>	UN55 14 LAMAS	827 - 881	<b>4232</b>	UN55 29 LAMAS	1652 - 1706
<b>4218</b>	UN55 15 LAMAS	882 - 936	<b>4233</b>	UN55 30 LAMAS	1707 - 1761
<b>4219</b>	UN55 16 LAMAS	937 - 991	<b>4234</b>	UN55 31 LAMAS	1762 - 1816
<b>4220</b>	UN55 17 LAMAS	992 - 1046	<b>4235</b>	UN55 32 LAMAS	1817 - 1871
<b>4221</b>	UN55 18 LAMAS	1047 - 1101		UN55 33 LAMAS	1872 - 1926
<b>4222</b>	UN55 19 LAMAS	1102 - 1156			
<b>4223</b>	UN55 20 LAMAS	1157 - 1211			

\* Altura libre de hueco de hoja